

PROTONEM

VOLUME 31, NO. 1 LE LUNDI 16 SEPTEMBRE 1991

Health services cut

Frédéric Tremblay

As a result of the new cuts by York University, the Glendon community lost its Health Services in May, leaving no opportunity for students to protest.

York University, which also closed the centre at the York campus, explained this decision by stating the lack of money and also legal reasons caused by the closure.

Health Services is among the cuts because it is not related to education, the first goal of the university.

On August 15, a letter from the York Federation of Students was sent to Harry Arthurs, the president of York University, expressing the opinion that this decision compromises the well-being of the Glendon community.

Elizabeth Hopkins, the V.P. Campus Relations/ Students Affairs sharply reacted to this letter by saying that Health Services at Glendon only provided a doctor's attendance on campus for one hour a day at noon and the assistance of a nurse six hours per day, Monday to Friday, during the academic year. As for her other arguments, Hopkins added:

- The health care concerned related to relatively routine matters.

- There were no laboratory facilities, nor was the Glendon facility equipped to handle medical matters requiring diagnostic complexity.

- Many of the students were already treated directly at Sunnybrook or at the Bayview Medical Clinic.

- To continue operating the facility would have needed repair.

Hopkins does not agree that the well being of the student community is compromised.

Students, faculty and support staff on the Glendon Campus may wish to use the services of the Bayview Medical Centre located at 2722 Bayview Ave. All doctors who assisted at the Glendon Campus Health Services will now be available there and have transferred their medical records to that location. The telephone number of the Bayview Medical Centre is 730-1212.

The building which previously housed Health Services will now be occupied by the Glendon Women's Centre, formerly situated in the GCSU offices near the Bistro.



Health Services loses out to education.

photo: Frédéric Tremblay

Adlam's agenda

Julie Ireton

As a new year is once again in full swing, so is the GCSU with its new changes and yearly agenda. The most noted change is the facelift given to the GCSU office. Mark Adlam says he wanted to make the office more visible and accessible to the entire student body. Adlam welcomes students to seek members of the GCSU when they have any questions, problems or suggestions. "The GCSU is here for the students," he says.

When asked what he expects in return from the students, the president said he'd like to see an end to apathy and a continuation of students taking part in events, clubs, sports and other activities offered at Glendon. One suggestion our student government has for the year is an anti-recession event(s) so that the students, especially those who had to go without a summer job or are going

through financial difficulties, are able to go out and have a good time without spending a lot of money.

Adlam said that he's been working on the goals he set out in last year's campaign. Among these goals was to see that the bookstore and perhaps even the pub are made accessible to handicapped students. The president feels the book store is the first priority and hopes to see the changes soon. The wrist tag policy for underage drinkers, which Mark also suggested in his campaign is also something the GCSU, and many of this year's frosh, would like to see implemented. This subject is, however, still under discussion.

One of last year's goals which has been dropped from this year's agenda is the improvements to the Salon Garigue. The GCSU would like to see changes made to this

■ see Prez, p.6

Affaires constitutionnelles

Julie Carbonneau

Robert Mackey

The Right Honourable Joe Clark, Constitutional Affairs Minister, discussed the present Constitutional dilemma at a conference held for some 100 leading members of about 40 pan-Canadian volunteer organisations on the Glendon campus last Friday.

M. Clark a parlé en général des propositions qui seront présentées à la Chambre des

communes par le Premier Ministre Brian Mulroney, d'ici à une quinzaine de jours. Il a constaté que les propositions principales concerneraient la reconnaissance du Québec en tant que société distincte ainsi que l'autodétermination des Autochtones. Warning his attentive listeners that the government announcement will not please everyone he said, "This is the time the country will be made or broken" and

later referring to the chance of a positive response to these proposals, "A victory is far from certain."

Selon M. Clark les Canadiens ont peur que l'on empiète sur leurs droits si l'on accorde des concessions à une minorité culturelle. Après que les propositions auront été présentées à la Chambre des Communes, les membres des parlements fédéral et provinciaux pourront, après discussion, les améliorer avant qu'elles soient adoptées par la Constitution.

When questioned by reporters Clark responded that the proposals were unlikely to be put before any type of constituent assembly although committees drawn up of experts might be formed to discuss particular propositions. Alluding to the seriousness of this renewed yet possibly final process, Clark felt that a failed country would leave a deep psychological mark upon the Canadian people and bring about bitterness between groups.

Dans son discours, M. Clark a indiqué que quelques ministres soulèvent encore des problèmes relatifs aux nuances de la langue et à son interprétation.



Clark speaks to volunteer organizations at Theatre Glendon.

photo: Frédéric Tremblay

Handwritten notes at the bottom of the page:

3 95
2 95
4 95
3 50
18 55
6 40
3 90
3 1

EDITORIAL

ProTem mirrors students

News, Forum, Entertainment and Classifieds. For many readers these words are like the faces of our scholarly acquaintances at the beginning of each academic year. Our memories, dusty and absent at first sight, flash before the minds' eye souvenirs of our friendship and the exciting times of past sessions spent together. Our friend? It is *Pro Tem*. Guiding each of us through the week, the newspaper is our contact with the entire campus and with the people who work and study here. On its printed pages we can discover the events and discussions of 1991-92 that we will remember.

Pro Tem will not be the syndicated media of large institutions and corporations spewing out predictable opinions and propaganda in an organized effort to manipulate its readers and perpetuate its own private existence. It will be neither left nor right...nor up nor down. Rather the paper will reflect the diversity of the people of Glendon College and their ideas. This is the challenge to contributors to inform us and keep us all aware.

The pages of *Pro Tem* should be to all of us a place of information and discussion where all of us can feel comfortable, where all of us can have our say, where all of us can listen, and where all of us can learn. It will take everyone to make it a reflection of ourselves.

For us to succeed it only takes five minutes here and there. A response to an article or a thought on an important matter. Let your voice be heard and make a change. *Pro Tem* depends on us all!

Robert Mackey



Bienvenue...

Dear Students,

I am very pleased to welcome, on behalf of the entire faculty and staff, incoming students to Glendon and returning students back for another year. We missed you over the summer. However, while you were away, we were all busy working on making your educational experience here the best possible.

Nous avons trouvé plusieurs nouveaux professeurs et membres du personnel qui sont venus des quatre coins du monde partager avec vous leur sagesse et leurs expériences. Nous leur souhaitons la bienvenue. Le nouveau programme de maîtrise en traduction a été approuvé par le gouvernement et le B.Ed. (français langue première) a été approuvé par le Sénat. Nous avons planifié un colloque important pour le mois d'octobre. Et enfin la principale a écrit une petite chanson pour le Collège que Robert Paquette a mis en musique. Il viendra cet automne la jouer à Glendon (le 20 septembre).

The space used by the former Health

Centre was given to the Women Students. As you will have noticed, we were also able to purchase new chairs for the cafeteria.

In between these many occupations, we have all been pursuing our scholarly activities. Professeurs et étudiants partagent des buts communs: la recherche des connaissances, l'apprentissage et la communication des idées et des découvertes. Je suis très heureuse de vous inviter à vous (re)joindre à notre communauté académique et à (re)devenir universitaire à la recherche des solutions aux problèmes sociaux, économiques, politiques, philosophiques, écologiques, linguistiques, littéraires, etc. du monde.

I look forward to meeting each one of you over the course of the year. Please do not hesitate to call on me if I can be of assistance to you. I hope you will participate to the fullest in all the activities which are planned for you this year.

Sincerely yours

Roseann Runte

COURRIER/FEEDBACK

Pro Tem welcomes your feedback and letters of up to 350 words in length. They must be typed, double spaced, and accompanied by the author's name and telephone number. Pro Tem reserves the right to edit submissions. ProTem Office 117 Glendon Hall.

Porte ouverte mardi 17 septembre 10h30 à 16h30 Pro Tem

PROTEM
Journal Bilingue de Glendon - Glendon's Bilingual Newspaper
Submission Deadline Thursday 5pm

Nous signalons à nos lectrices que l'usage du masculin pluriel inclus aussi bien le masculin que le féminin.

Journal Bilingue de Glendon - Glendon's Bilingual Newspaper
PROTEM

2275 Bayview Avenue
Toronto, ON
M4N 3M6

Pro Tem is the weekly bilingual and independent newspaper of Glendon College, founded in 1962 as the student publication of York University. Pro Tem est le seul journal étudiant bilingue en Ontario. Nos bureaux sont situés dans le Manoir Glendon, local 117. Editorail and Advertising: 487-6738. Tirage: 4000 exemplaires.

Editor-in-chief
Robert Mackey

Adjoint à la rédaction
Frédéric Tremblay

Graphic Designer
Louis-Eric Boutin

Typesetters
Dave Bennett
Jennifer Wiens
Cheryl Tripp

Réviser
Guéoula Azincott

Adjointe à la rédaction
Julie Carbonneau

Entertainment Editor
Pamela Redford

Photography Editor
Frédéric Tremblay

Distribution
Steve Mazerolle

Assistant Editor
Julie Ireton

Production Manager
Natalie Hafez

Advertising Manager
Mahmud Abdulla

Copy Editor
Tanya Paladin

Collaboratrice
Naomi LeeFook

Major changes at the Pub

Frédéric Tremblay

During the summer, the Board of Directors of Café de la Terrasse sailed through many storms. The first was caused by the illegal dissolution ordered by the Principal, Roseann Runte, of the Pub's Board.

In fact, the board could not be dissolved because under the Liquor Licence Act of Ontario it is a legal corporation, an independent entity. Principal Runte was forced to retract her letter.

The dissolution stemmed from a lack of communication between the previous manager, Louis Seta, Leon Wasser, the Dean's Office, the Principal and the Board, and also the desire of Principal Runte to restructure the Pub's managerial system.

The Board began by firing the Pub manager and the entire staff in July. The reason for dismissal was that Seta had broken the Liquor Licence Act

on several occasions and contradicted other York University policies.

A private lawyer was consulted by the Board in order to precisely redefine certain positions like the role of Leon Wasser who considered himself the Liquor Licence holder at Glendon. His actual role is only that of an agent of the Licence holder. The official Licence holder is York University whose powers are exercised by the Principal.

After much discussion and research the Board presented some new policies that could be implemented in the restructuring of the Pub

- Students wishing to be served alcohol on the premises of the Pub will be required to show photo I.D., as stated by law.

- Students must provide proof of students status on Thursday nights only, by presenting their Glendon student Sessional Validation Card.

- Guests will not be permitted entry to Glendon College's Café de la Terrasse on Thursday nights.

- The Pub will no longer stamp students who arrive early on Thursday nights, subsequently disappear, drink in their rooms before later returning in the evening.

- The entrance door will move closer to the outside exit.

- The telephone behind the bar shall be reserved for incoming calls only (except the Don on duty).

- A code of conduct will be developed for employees, the manager, the assistant managers and members of the Board.

These proposals are still being discussed by the Board, the Dean, the Principal and Leon Wasser. They will also be discussed at the General meeting of Oct 8 at 6pm at the Café de la Terrasse.

What the Principal suggests now is that the Café de la Terrasse disincorporate itself and an advisory Board to the Principal should be established to govern the Pub. There are pros and cons as listed below:

Pro's

- Glendon Administration has a good reputation for working with/for students

- less time/energy and responsibility for directors

- ladder of responsibility is explicit

greater consistency from year to year

Con's

- York Administration has a poor reputation for working with/for students

- loss of Incorporated status; loss of business leverage

- will there be a real member's voice?

- loss of another of Glendon's unique symbols

Further discussion will follow.

First female pub manager

Frédéric Tremblay

Last August, the Board of Directors of Le Café de la Terrasse created a first by hiring a female for the position of manager.

Anita Zijldeman, who can express herself in both official languages, is replacing Louis Seta who was fired by the Board with the backing of the Administration, the Principal and the Dean's office.

La nouvelle gérante n'en est pas à ses premières armes dans le métier. She was assistant manager of the pub two years ago and she possesses a good deal of experience in the restaurant business.

Her first plan of attack is to

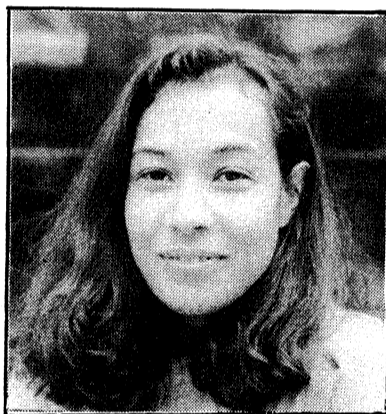
increase the number of events held at the Pub. "I want to reserve Fridays and Saturdays to hold events in which the students are going to have the

chance to express their talents."

The new manager is also looking for alternatives to improve the menu. It is difficult. She added, "we have no funds and we are very limited in terms of space." Salads and home-made soups could be among the possible new choices on the menu.

To avoid the free for all, and lawsuits, the manager told *Pro Tem* that the laws of York University and the Liquor Licence Act of Ontario will be reinforced, especially on Thursday night.

Anita extends a welcome to everyone and she is open to any suggestions.



Anita Zijldeman

photo: Frédéric Tremblay

Open House Tuesday September 17th 10:30am - 4:30pm Pro Tem

“

“Combining the Glendon Liberal Arts Program and my involvement in Pro Tem enabled me to pursue a career in Journalism.”

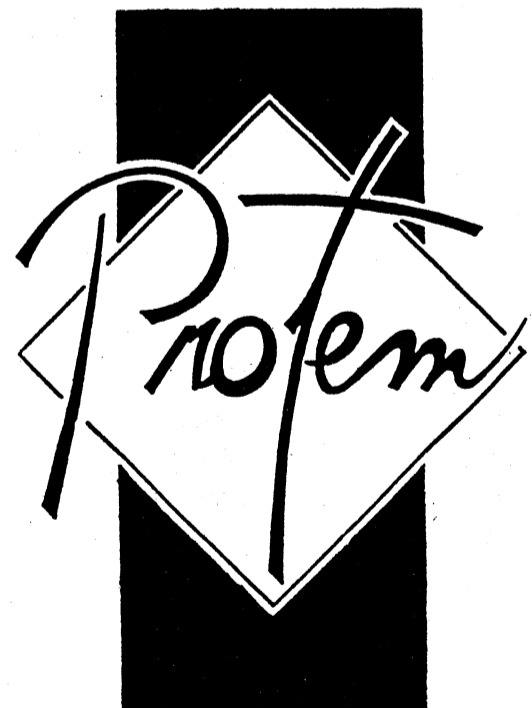
Pat Banville
Editor-in Chief 1987-1988
Ryerson Graduate Journalism

*Out of 400 applicants, only 33 students were accepted into the Ryerson Journalism program of 1988-89. Three of them were from Pro Tem.

“

Sam Carrière et Harold Levy sont deux autres anciens étudiants de Glendon qui ont su profiter de leur expérience à Pro Tem; travaillant tous deux pour de grands journaux, le "Globe and Mail" et le "Toronto Star".

Make a change. Write for Pro Tem.
Venez nous voir: Salle 117, Manoir Glendon.



Positions open:

- Advertising Manager \$\$\$
- Circulation Manager \$\$\$
- Typesetters \$\$\$
- Office Manager
- Sports Editor
- Treasurer
- Journalists



ENTERTAINMENT

Entertainment at student prices

Pamela Redford

Greetings Frosh, and welcome to Glendon College. During your tour of our campus you were probably introduced to the vast cultural opportunities that the campus offers. Theatre Glendon, Galérie Glendon, Radio Glendon, and the Pub are all at a convenient location and at affordable prices. For those students who are not familiar with the sights and sounds of Toronto here is a list that may help with your introduction to the city.

Clubs:

location-Queen St. West
The Bamboo, Rivoli, and the Horseshoe are all clubs that have live bands nightly. The cover price is \$5.00, although the Rivoli is usually more (depending on the band).

location-the vicinity of Bathurst Station

Clinton's and Lee's Palace are excellent clubs to see bands perform. Not only affordable at \$5.00, but also bands can be viewed close-up.

location-local (Yonge and Eglinton).

The Unicorn is an off campus

pub that is located one subway stop south of the campus. The atmosphere is friendly and a band spends the night playing old favorite songs.

Dance Clubs:

location-Queen's Quay.
If you have a free Monday evening, head down to RPM for "Psychedelic Mondays" and dance to classic music from the Doors, Van Morrison and Steppenwolf. The club offers a free shuttle bus service from Union Station to their front door.

location-Bathurst and Queen.
The Bop. If you're partial to House music head over.

Beer Holes:

The Brunswick House and the Paddock are eternal favourite pubs for students due to their unusual decor and cheap priced liquid refreshments.

If you are searching for a pub in our vicinity, the Rose and Crown is located at Yonge and Eglinton.

Comedy:

Cheap nights can be found at Yuk Yuk's (at Yonge and Eglinton) and at Big City Improve (on Queen St. West) each at \$4.00 on Tuesday nights. Although Yuk Yuk's is amateur

night on Tuesday, at four dollars you can always resort to heckling at the comedian.

French:

The Carlton Cinemas hosts a variety of foreign features, including French films. Also look at the Canada Square theatre for French flicks. Don't forget the half price Tuesday nights.

Unfortunately, Toronto is limited with it's content of French entertainment. Theatre Français is the best off-campus location for French plays.

As a result of the recent TTC strike, commuting to these locations may be difficult. Do not despair...Glendon has it all!!! Glendon is the host to a variety of English-French entertain-

ment. The theatre performances are professional, and as a result are usually sold out well in advance. Last year's agendas for theatre performances and art displays were first class, and this year promises to surpass Glendon's previous accomplishments.

Have Fun!!!

Long hot summer of '91

Naomi LeeFook

Due to the recession, the summer of 1991 will most likely not be remembered as one of the greatest summers for concert tours. Not only were ticket sales down, but also some big shows and even entire tours were forced to cancel due to poor ticket sales. Despite the times, however, there was quite an astounding variety of international music which was presented in concert in Toronto.

Not knowing a great deal about the adult contemporary contingent which found themselves touring quite extensively this summer (they have to make money like everyone else), I have decided to concentrate on the music which has gained its reputation as being the music of Universities and Colleges everywhere -- the alternative music scene. But before I do go on, it is interesting to note that ticket costs for concerts, although extremely pricey due to several factors, not the least of which being the GST, corresponded to the economic situations of the audience for the act. A good example of this is a comparison of the prices for the Lollapalooza tour, which came to \$33.05 with all charges, to the price of tickets for Whitney Houston, which started at \$35.00. She had to cancel her concert due to poor ticket sales, and yet Lollapalooza was one of (if not *the*) biggest selling tours of the summer.

Speaking of the Lollapalooza tour (which will probably be remembered as the *only* concert of 1991), it was the greatest demonstration of the trend this year where performers basically told their management where to go, and arranged for the "Megatours" made up of several groups -- a great deal for the audience, and more importantly, a chance to show the younger generations that one's musical choice no longer has to be segregated by style, you no longer have to be ostracized by your peers if you just happen to like Public Enemy and the Sisters of Mercy equally. In fact, as we

discovered, a lot of other people happen to as well.

Even the performers illustrated their diversity, bringing back the music industry nightmare of "how do we classify this music?". I wish the industry the best of luck in doing this with MC Ice-T's latest release.

But I believe that the best concerts this year did not happen at the supersized venues around town. As usual, they happened in the club circuit, but only for a unique reason. The recession forced many acts which would normally fill the Concert Hall, or Massey Hall for that matter, to book themselves into the smaller club venues, as they were more economical, and allowing for fire regulations to be stretched, could probably pack in the same amount of people as the slightly larger venues. It also allowed for ticket prices for these shows to be at an incredibly low price: something unavailable at the Concert Hall. Two of the clubs that will end up as one of the big winners this summer are the Spectrum, which hosted among other acts yet another memorable tour by the Ramones, and the Opera House, host to industrial acts such as Meat Beat Manifesto and My Life with the Thrill Kill Kult, as well as the Native Canadian band Kashtin.

Yes, dear fans of alternative music, remember the summer of 1991 well, as this may be the last summer for a long while that you may see these acts appear in Toronto again. But, this is not due to the extensive schedules endured by these acts. You have Canada Customs to thank for this.

If you are a fan of rap music, you may want to move to Buffalo if you wish to catch your favourite non-Canadian rap artists in action. This summer, Customs wasn't just busy hassling cross-border shoppers. Public Enemy and MC Ice-T were held for misdemeanours as they tried to cross the US-Canadian border in Ontario during their summer tours. While it may not be unusual for performers to be held up at Customs for having

their Visas out of order, or for not having the proper papers, such as the cases this summer involving Squeeze and My Life with the Thrill Kill Kult, the cases involving Public Enemy and MC Ice-T stand out for several peculiar reasons.

Both sets of performers are rap artists. This could be ruled out as coincidence, however, both groups are also known as controversial rap artists. Also, there have been incidents of violence reported at both Public Enemy concerts and at the showings of *New Jack City*, the spring film starring Ice T as an undercover officer. These incidents occurred only in the United States.

Both sets of performers were announced as prominent acts involved in two of the Megatours this summer: Public Enemy was on a five-act tour with Warrior Soul, Gang of Four, Young Black Teenagers, and the Sisters of Mercy; MC Ice-T was on tour with the Lollapalooza Festival. Authorities had fair warning that the acts were coming to Canada, yet did or said nothing to show their disdain for these acts, nor tried to prevent their tour stops in Toronto between the time that the shows were booked until the day of the concert. Not to mention that Public Enemy had performed previously in Canada during the past twelve months, and were not prevented from entering at that time nor were they told at that time not to come back.

Both sets of performers were held for at least three hours for what were termed as minor misdemeanours; as Chuck D of Public Enemy stated when he was finally allowed to appear at Kingswood for his set, "If I was a baseball player, I wouldn't have had any problems getting through." Note that the All-Star Game was held in Toronto during the same week as the Public Enemy show.

By the way, special thanks to Canada Customs for allowing the audience a taste of Public Enemy -- be it only two-thirds of the group.

■ see Summer '91, p.7

FINALLY, THE MOST INTERNATIONALLY ACCLAIMED FILM COMES HOME FROM CANNES, NEW YORK, JERUSALEM, TOKYO, LUCARNO, MOSCOW, HOF...

PARIS: "The angel flirts with the devil and the violator with the victim." *L'Express*



Atom Egoian's

THE ADJUSTER

ALLIANCE COMMUNICATIONS CORPORATION PRESENTS AN EGO FILM ARTS PRODUCTION
THE ADJUSTER • ELIAS KOTEAS • ARSINÉE KHANJIAN • MAURY CHAYKIN

GABRIELLE ROSE • DAVID HEMBLEN • AND JENNIFER DALE

DIRECTOR OF PHOTOGRAPHY PAUL SAROSSY • PRODUCTION DESIGNERS LINDA DEL ROSARIO & RICHARD PARIS

MUSIC BY MYCHAEL DANNA • EDITOR SUSAN SHIPTON • CO-PRODUCER CAMELIA FRIEBERG

SOUND DESIGN STEVEN MUNRO • ASSOCIATE PRODUCER DAVID WEBB • WRITTEN & DIRECTED BY ATOM EGOYAN

PRODUCED WITH THE FINANCIAL ASSISTANCE OF TELEFILM CANADA AND THE ONTARIO FILM DEVELOPMENT CORPORATION



OPENS:

SEPTEMBER 16 - SHOWCASE
SEPTEMBER 20 - CANADA SQUARE



NEWS

Hospitalité Glendon L'accueil des aveugles

Julie Carbonneau

Pendant le mois de juillet, Hospitalité Glendon en collaboration avec L'institut national canadien pour les aveugles a permis à environ une quinzaine d'aveugles de l'institut de venir demeurer dans la résidence Wood. Ces personnes aveugles se sont préparées à leur rentrée universitaire de septembre. Ce séjour en résidence leur a permis de se familiariser à la vie estudiantine. De plus, pendant la journée, ils ont pu suivre des cours de préparation aux études universitaires.

Contrairement à ce qu'on pourrait penser, l'aménagement de la résidence n'a pas nécessité beaucoup de changements physiques dans la résidence. Puisqu'ils demeuraient au premier étage de la résidence, il a suffi d'apposer des autocollants en braille aux endroits auxquels les étudiants avaient accès. C'est ainsi que leurs déplacements dans le collège ont été facilités. Ce séjour aura été bénéfique non seulement pour les étudiants aveugles, mais aussi pour les autres résidents. Pendant cette période, nous avons pu observer leur vie

quotidienne, et nous rendre compte qu'elle était à la fois différente et semblable à la nôtre, et ce sur plusieurs aspects. Cette expérience nous a permis de réaliser que nous étions privilégiés puisque nous pouvons non seulement voir mais aussi avoir l'opportunité et la facilité d'étudier à l'université et d'habiter le campus.

Après une expérience aussi enrichissante, Glendon pourrait être reconnu comme étant un collège qui facilite l'accès aux handicapés physiques ou visuels, aussi bien dans l'école que dans les résidences.

Glendon College Students' Union Association des étudiants du Collège Glendon Balance Sheet As of April 30, 1991		
Assets	1991	1990
Cash in bank	\$ 9 921	\$13 913
Office equipment	8 257	8 257
Display equipment	12 092	12 092
	\$30 270	\$34 262
Liabilities and Surplus		
Accounts Payable	\$ -	\$ -
Surplus, beginning of year	34 262	25 780
Net income (loss) for year	(3992)	8 482
Surplus, end of year	\$30 270	\$34 262

Glendon College Students' Union Association des étudiants du Collège Glendon Statement of Receipts and Disbursements As of April 30, 1991		
Receipts	1991	1990
Grants and Trust Fund	\$ 77 577	\$ 90 521
Other receipts	10 574	11 105
	88 151	101 626
Less: Referendum appropriation and grants		
Schedule I	41 256	38 421
Balance available for other expenses	46 895	63 205
Disbursements	23 158	23 365
Social and cultural affairs	12 799	12 853
Salaries	2 171	1 142
Handbook	7 347	8 326
Office	2 200	2 000
Audit	3 212	1 964
Computer centre	-	3 908
Environmental protection	-	1 165
Sundry	\$ 50 887	\$ 54 723
Net income (loss) for year	\$ (3 992)	\$ 8 482

Radio Glendon Statement of Receipts and Disbursements For year ended April 30, 1991		
Receipts	1991	1990
Glendon College Students' Union	\$ 10 234	
Other	4 304	
	\$ 14 538	

Disbursements	
Salaries	3 320
Disc jockeys	1 900
Capital equipment	5 089
Equipment repairs	760
Office and telephone	1 068
Bank charges	193
Other	50
	\$ 12 380

Excess of Receipts over Disbursements	
	\$ 2 158
Bank balance, beginning of year	\$ (32)
Bank balance, end of year	2 126
Increase in cash balances	\$ 2 158

Note: The year-end balances include an outstanding deposit of

Glendon College Students' Union Association des étudiants du Collège Glendon Schedule of Referendum Appropriations and Grants For the year ended April 30, 1991		
	1991	1990
Pro Tem	\$ 15 051	\$ 16 996
Radio Glendon	10 234	4 800
Theatre Glendon	1 400	1 462
Trait d'Union	1 646	2 150
Friends of Glendon	4 200	4 386
Glendon UN Team	1 650	1 620
Psychology Club	412	365
Debating Society	1 500	1 042
Economics Club	1 196	1 184
Club Afrique-Caribe	1 173	500
Spanish Club	600	350
Amnesty Int. Club	691	671
Sundry	1 503	2 895
	\$ 41 256	\$ 38 421

Notes to Financial Statements

1. Depreciation on office and display equipment has not been provided in the accounts.

Pro Tem
Balance Sheet
As of April 30, 1991

	1991	1990
Assets		
Cash in bank	\$ 4 821	\$ 1 211
Liabilities and Surplus		
Uncashed cheques	\$ 3 196	\$ 1 247
Surplus (deficit) beginning of year	(36)	64
Net income (loss) for year	1 661	(100)
Surplus (deficit) end of year	1 625	(36)
	\$ 4 821	\$ 1 211

Notes to Financial Statements

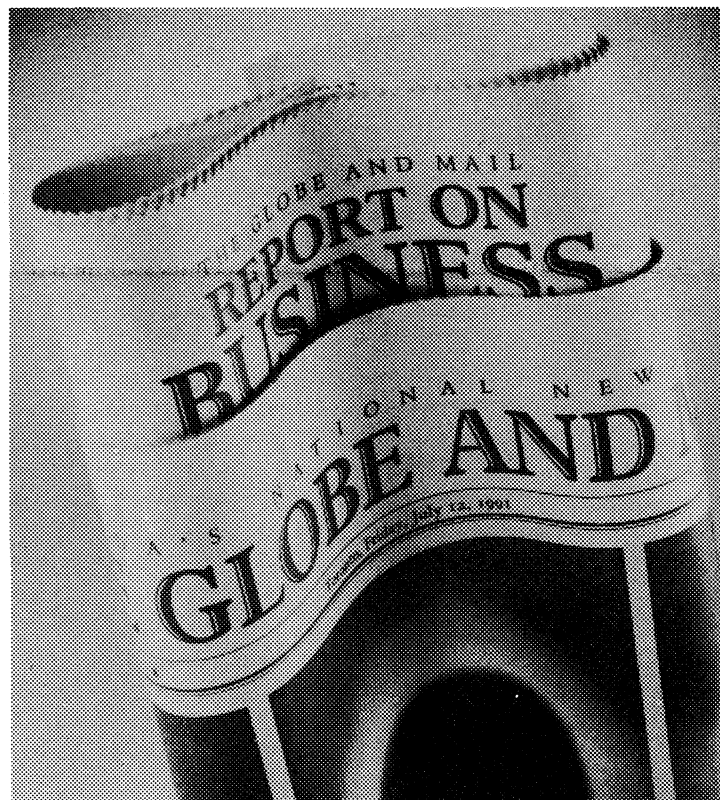
1. The statements have been prepared on a cash basis.

Whatever the subject, we keep you informed.

Subscribe to The Globe and Mail now at the special student rate of **50% off.**

As a student subscriber, you'll save \$10 when you register for the GREEN LINE - GLOBE AND MAIL INVESTMENT CHALLENGE

- Canada's most challenging and dynamic simulated investment game
- Play and learn the stock market like a pro
- Thousands of dollars in prizes to be won
- For complete information call (416) 663-9181



MAIL TO: The Globe and Mail, Circulation Dept., 444 Front St. W., Toronto, Ontario, Canada M5V 2S9

Yes! I want to become a Globe and Mail subscriber. Begin my special-rate subscription for
 13-week term: \$28.28 + \$1.98 GST = \$30.26
 26-week term: \$56.55 + \$3.96 GST = \$60.51

Name _____
 University _____ Campus _____
 Residence _____ Room # _____ Student I.D. _____
 Address _____
 City _____ Province _____
 Postal Code _____ Phone _____
 This address is on campus off campus
 Cheque/money order enclosed Visa MasterCard American Express
 Charge Card # _____ Expiry Date _____
 Signature _____

(required to validate offer)

STGA1-77

NOTE: Offer only valid where home delivery is available. Offer expires November 30, 1991

CANADA'S NATIONAL NEWSPAPER
THE GLOBE AND MAIL

AGENDA GLENDON CALENDAR

September 12 - October 31

Totem & Factotem
Mark Prent
Sculpture
Glendon Gallery
lundi - vendredi: 11h - 16h
dimanche: 13h - 16h
Tel: 487-6721

September 17
ProTem
Open House/Portes Ouvertes
10h30 - 16h30
Bienvenue à tout!
Everyone Welcome!
Coffee & Donuts
Free!
Gratuite!
20 ou 21 septembre
Le chanteur Robert Paquette donnera un concert au Théâtre Glendon cette semaine. A ne pas manquer tout spécialement parce qu'il a mis en musique une chanson pour Glendon qui a été écrite par notre principale Roseann Runte. La date précise sera annoncée dans les prochains jours.

New rez tutor

Frédéric Tremblay
During the summer the Dean's office added a new member to its team. Shelagh Corbett is the new tutor at Glendon.

Le travail de la nouvelle tutrice se veut une liaison entre les résidents et le bureau de la doyenne.

Her young age, dynamism, student status and previous experience as a Don of residence all seem to indicate that Corbett has all the tools necessary to be close to the students.

She will also organize workshops on different issues such

as AIDS, Cults, STD, etc.

The previous tutor, Gilles Fortin, is still in charge of student affairs, foreign students, visas and receiving official complaints at Glendon.

The new tutor's office is in Hilliard residence, room D101. It is possible to arrange an appointment by telephoning her at 487-6707. She is available:

- M 1pm-5pm
- T 9am-noon
- W 9am-noon
- T 6pm-8pm
- F 10am-noon

■ **Prez**
room; however, the decision lies with those who have jurisdiction over the room and if funding is available.

There have been no staff problems at the GCSU yet this year. Mark Adlam says that he is pleased with the work his

Vice-President, Basam Abou-Naïm has done to work towards this year's agenda and also the work Carole Kandakji did for this year's Orientation Week to make it safe, eventful, and fun.

CLASSIFIEDS

Felicitations!

Chaque printemps, l'Association des Etudiants du Collège Glendon décerne le Prix John Pollard et plusieurs Certificats d'Appréciations et de Mérite. Le comité responsable pour le choix des récipiendaires a travaillé avec l'aide des étudiants, la faculté, et le personnel du Collège. Le comité a demandé à la communauté de fournir les nominations. Le choix final était difficile mais après plusieurs délibérations, les étudiants suivants ont été choisis:

- Le Prix John Pollard** - Yonas Tamrat Stephanos
- Certificat de Mérite** - Bradley Ruffle
- Certificat d'Appréciation** - Bassam Abou-Naim, Rony Behar, Mike Ford, Steve Gaudreaut, Helen Griffin, Anar Kassam, Bruno Larose, Sharon Lowry, Fraser Mitchell, Neil Stevenson, Peter Stoop, Craig Williams.

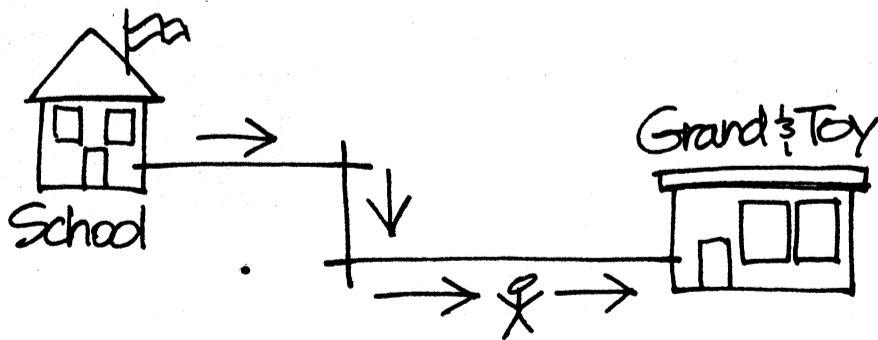
While the John Pollard Award and the Certificate of Merit have an academic criteria, all three awards recognize the student's commitment to extra-curricular life at the College. This year's recipients were involved in a variety of activities which include: participation in the Theatre, organisation of a used textbook exchange, Pro Tem, organisation of Glendon's soccer team, first student speaker at the Economics Club, Radio Glendon, G.C.S.U., Faculty Council, residence Don, Fashion Show host... Their contributions are varied and numerous. We thank each student for the leadership they have shown and their commitment to life at Glendon.

Sharmila Khare
Directrice des Affaires Académiques
G.C.S.U.

ATTENTION GLENDONITES!
Advertising in the Pro Tem Classifieds is FREE!!
Contact our Advertising Manager for more details.
ProTem Office: 487-6738

HEY ALL GLENDON CLUBS AND SERVICES
Interested in promoting your groups?
ProTem is offering 2" by 2" spaces at a beginning of the year discount rate.
Contact our Advertising Manager
ProTem Office: 487-6736

Leave School And Stop Wasting Your Parents' Money.



If you think school supplies on campus cost too much, head for Grand & Toy. Because when you show your valid student I.D., you'll always get 10% off our regular priced items. Everything from pens to pads, and a whole lot more.

So come into Grand & Toy today, and show your parents what you've learned.

GRAND & TOY
OFFICE PRODUCTS - PRODUITS DE BUREAU

Visit any of our Toronto area stores.

Pro Tem

mardi
19h00

Réunion

Six semaines à Québec

Julie Ireton

Il y a un programme qui est offert par le gouvernement du Canada pour que les étudiants anglophones puissent apprendre le français et la culture québécoise pendant six semaines en été. Ce programme est non seulement une bonne occasion d'apprendre l'autre langue du Canada, mais il est aussi gratuit grâce aux bourses du gouvernement canadien.

Cet été, beaucoup d'étudiants de Glendon ont participé à ce programme à l'Université du Québec à Trois-Rivières. Là le

programme est nommé "l'école internationale de français" et il est également offert aux étudiants étrangers. Quatre cent cinquante étudiants sont venus des provinces du Canada, des Etats Unis, du Japon, et d'Amérique du Sud.

Japon, et d'Amérique du Sud. En même temps un programme était offert aux francophones du Québec dans le but d'améliorer leur français. La plupart des étudiants de Trois-Rivières habitent dans les nouvelles résidences. Les autres habitent dans des appartements proches de l'école.

En début de programme, chaque étudiant doit passer un examen qui permet d'évaluer son aptitude en français.

Les cours de français sont donnés du lundi au vendredi. Le matin les étudiants apprennent la littérature québécoise et aussi la grammaire française. Ils ont aussi bien des activités individuelles que collectives qui leur permettent d'améliorer leurs compétences orales et écrites.

L'après-midi il y a des cours de conversation et des ateliers différents avec des ordinateurs, des danses folkloriques des

des chansons québécoises et des danses aérobiques.

Chaque weekend l'université propose des voyages aux étudiants. Cette année ils ont visité le Vieux-Québec, Montréal, le Vieux Trois-Rivières le Parc National de Saint-Maurice et ses cascades, et aussi une cabane à sucre.

Ce programme est aussi offert dans beaucoup d'autres universités du Québec.

Pendant ces six semaines les étudiants ne doivent pas parler l'anglais, mais seulement le français. C'est donc un moyen parfait pour apprendre le

français; et à la fin du programme les étudiants obtiennent un crédit.

■ Summer '91

For all of this hassle, the losers in all of this turn out to be us, the audience. At Kingswood, Public Enemy's performance was only allowed to be twenty minutes long, after all of the delays at Customs and the noise restriction law of the town of Maple. Chuck D empathized, "We like performing for y'all, but I don't need this bulls--t, you know what I'm sayin'?" His sentiments not only reflect those of Public

Enemy and Ice-T, but also those of the acts that were involved in the megatours along with them. This may affect the tour bookings of these acts in that they may think twice about coming back to Canada in the future. Siouxi Sioux probably stated it best of all: (Toronto is)...a lovely city. Such a shame about the restrictions."

The government may say that they want to keep "the wrong type of people out of the

country." It is our duty to make sure that the wrong type are those who would truly disrupt the harmony of our country, and not those who are trying to promote it. Keep this in mind when you look at the list of acts which will come to Toronto in the summer of 1992. (Next instalment: the new US policy of visa restrictions and how this will affect Canadian entertainment.)

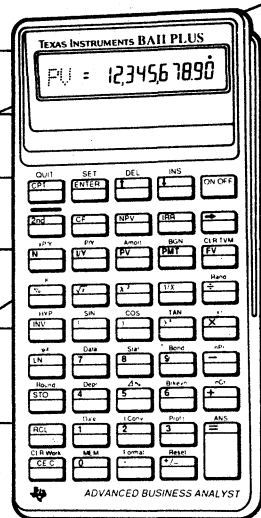
Pro Tem
Tuesday
7:00 pm
Meeting

Grande
ouverture

Bistro
Glendon

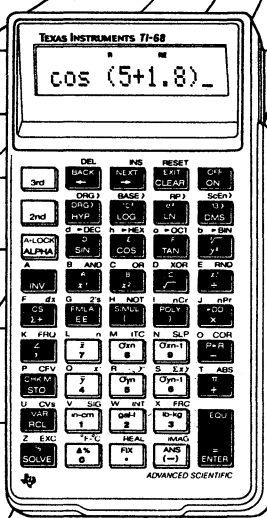
lundi
le 16 septembre
11h30

DECISIONS, DECISIONS...



BA II PLUS™
Easy-to-use calculator gives business professionals and students access to powerful features such as cash-flow analysis and advanced, list-based statistics.

- Helps you solve time-value-of-money calculations including annuities, mortgages, leases, and savings. Also generates amortization schedules.
- Does cash-flow analysis for up to 24 uneven cash flows with up to 4-digit frequencies; computes NPV and IRR.
- Gives you 4 methods for calculating depreciation, book value, and remaining depreciable amount.
- Includes trigonometric functions, natural logarithms, powers, and breakeven analysis.
- Gives business professionals and students access to powerful features such as cash-flow analysis and advanced, list-based statistics.

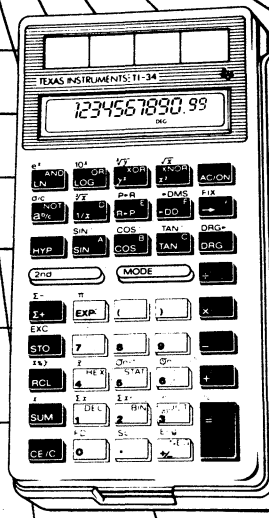


TI-68
254 ways to succeed in math, science and engineering.

The TI-68 from Texas Instruments. With 254 powerful built-in functions, the TI-68 advanced scientific calculator from Texas Instruments helps you solve even the most challenging math, science and engineering problems fast and easily.

For instance, the TI-68 solves up to five simultaneous equations with real or complex coefficients, has powerful formula programming capabilities and 40 complex number functions. There's also a last equation feature, 12-character alphanumeric dot-matrix display, a polynomial root finder and one and two-variable statistics capability.

Don't let a few complex technical problems slow you down. For the value and functionality, the TI-68 is just your speed — fast!

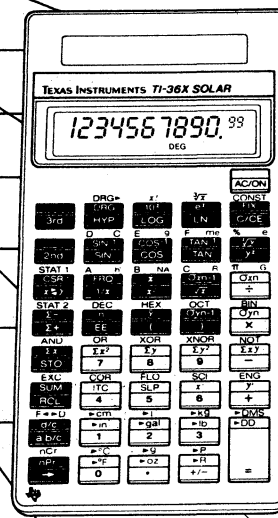


TI-34
An easier way to handle math and science.

The TI-34 calculator from Texas Instruments makes scientific functions easy to use during tests or on the job because we've separated function keys from number keys by using color-coding.

These colorful keys provide very useful math, science and engineering functions. The TI-34 can operate in three basic number systems; hexadecimal, octal and binary. One-variable statistics, fractions, logarithms, reciprocals and dozens of other scientific functions are no problem either.

Let our easy-to-use keyboard help you stay in touch with math and science. Choose the convenient color-coded TI-34 calculator from Texas Instruments.



The TI-36X SOLAR
sheds new light on math, science and statistics.

There are at least 164 good reasons to choose the TI-36X from Texas Instruments... the 164 function scientific calculator that works perfectly, even in low light. We can't list them all. But we can tell you that the TI-36X SOLAR is easy to use, especially on tough problems in math, science, computer math and statistics.

Perform a wealth of scientific functions, from common and natural logarithms to permutations. Plus one and two-variable statistics including linear regression. And enjoy such extra advantages as metric/English conversions, number base conversions and advanced fractions capabilities. One more thing. You can forget about batteries; ANYLITE™ solar cells work even in low light levels.

Enlighten your calculations with the TI-36X SOLAR. It won't leave you in the dark when you need fast, accurate answers.

For further information call 1-800-661-2007

TEXAS INSTRUMENTS

Café de la Terrasse

Very Hot

R.G.'s D.J.'s

THURSDAYS 'GLENDON NIGHT'

Students: \$2.00 Sorry, no guests
 Alumni: \$4.00 I.D. required

Café de la Terrasse
Heures d'ouverture

lundi - mercredi
 11h30 à 24h00
 jeudi
 11h30 à 1h00
 vendredi
 11h30 à 24h00
 samedi
 5h00 à 24h00
 fermé les dimanches

Café de la Terrasse
Fall/Winter Hours

Monday - Wednesday
 11:30am - midnight
 Thursday
 11:30am - 1:00am
 Friday
 11:30am - midnight
 Saturday
 5:00pm - midnight
 closed Sundays

Café de la Terrasse
Fall Specials
Spécialités

Hamburger & soda...\$2.50
 Hot dog & soda...\$2.50
 Chicken Burger/Fricadelle de
 Poulet, salade & soda...\$3.99
 Pastrami on rye, salaç...\$3.00
 (cheese/fromage...0.50 extra)
 Grilled cheese & soda...\$2.00

Talented?
musicians wanted
audience guaranteed!
venez jouer pour nous
 contact/contactez
 pub manager

Live
Entertainment
Fridays/Saturdays
 Guests welcome

COUPON
Coffee/Café
.25¢
 Valid: Sept. 16-21
 Venez nous voir
 Come see us

Bienvenue A Tous
Welcome