

PRO TEM

VOLUME 16 NUMBER 1

SEPTEMBER 8, 1976

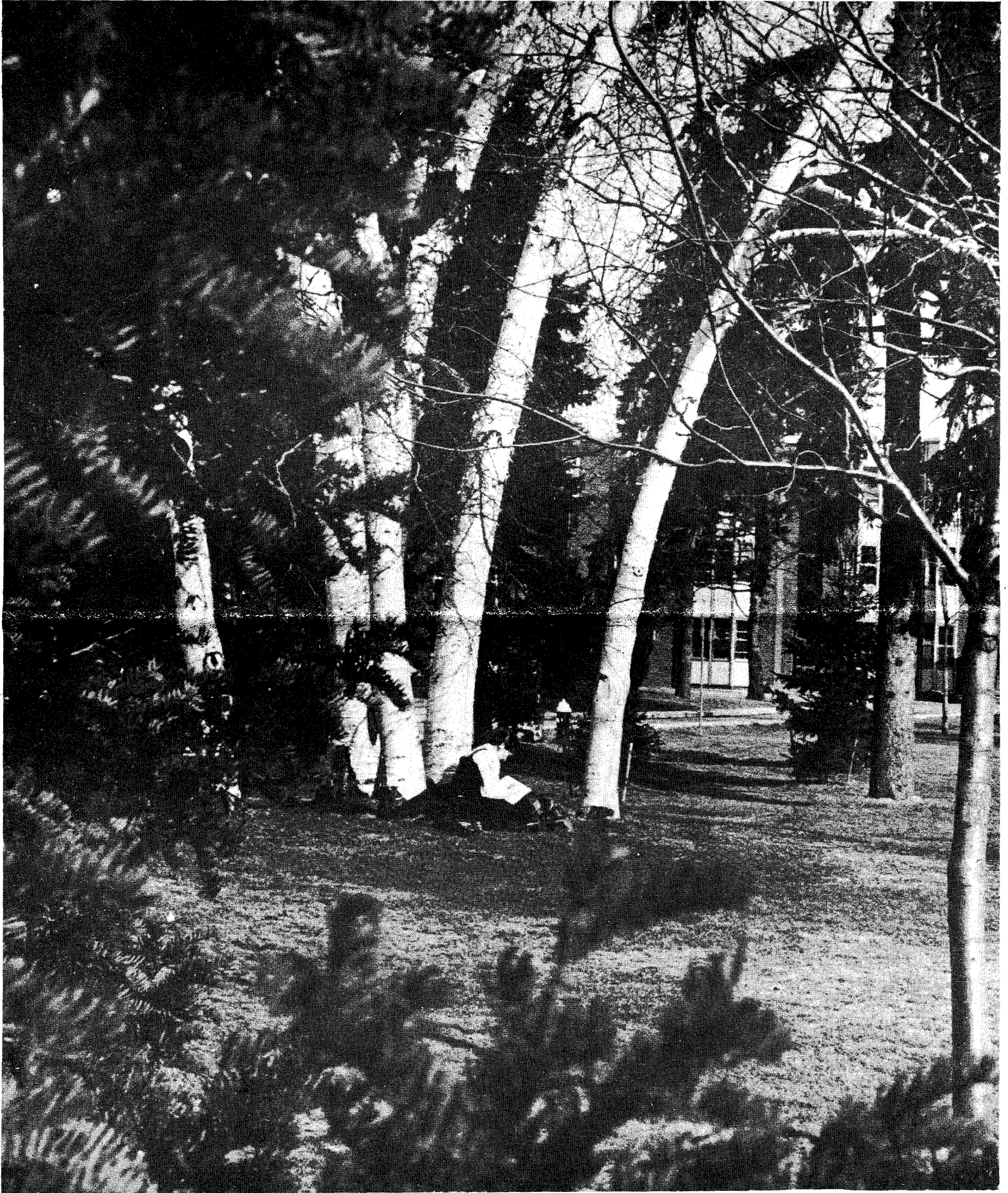
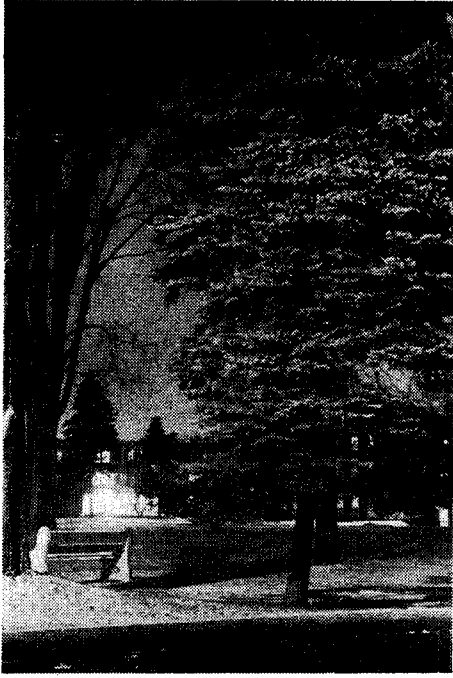


Photo by Alan Lysaght.

SPECIAL ORIENTATION WEEK ISSUE



The shining light

Dime Bag

DIME BAG is a poetry magazine. It publishes the poetry written by the Glendon community in either of the two official languages. **DIME BAG** also publishes sketches and photographs, but mainly, it is a poetry magazine.

The method by which **DIME BAG** gathers its poetry is simple. If one has written a poem, or a number of poems, and wishes to see his poem or poems in print, and so benefit from the opportunity, he simply takes his material to Bob Simmons' office, R.C117. From what has been gathered, the editors of the magazine select those poems which will make up the forthcoming issue.

This year, the editors of **DIME BAG** would like the names and phone numbers of those who submit, because we may wish to communicate with them; to ask for an explanation, or possibly recommend a revision. I feel compelled here to mention that we, the men and women of **DIME BAG**, are kind-hearted sorts and there's absolutely no reason to fear razor-edge dissecting of tender tissues, or vicious mutilation of one's most precious emotion.

You may begin submitting your poems as of the first day of classes.

The **DIME BAG** Editors

Bookstore

The Glendon Bookstore would like to take this opportunity to welcome new and returning students, as well as faculty and staff members, to the 1976/77 school year.

For those of you who have not yet visited us, we are located in Glendon Hall (the old mansion). In addition to text books, we also carry a selection of general reading (some in French and Spanish), stationary supplies, gift items and greeting cards, as well as candy and assorted sundry items (soap, toothpaste, shampoo, etc.).

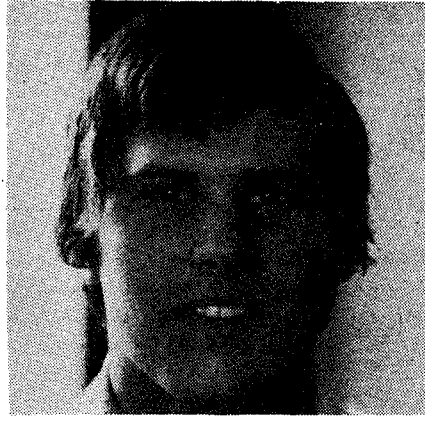
Our hours until Sept. 13 are from 9:30 to 4:45. Beginning Sept. 13 through Oct. 1, our hours will be 9:30 to 7:00 Monday - Thursday, and 9:30 to 4:45 on Friday, with hours to 8:00 Sept. 20-23. We will be open from 10:00 to 2:00 on Sat., Sept. 18 and 25. From Oct. 4 to the end of term, our hours will be 9:30 - 4:45 except Tues. and Thurs., when we will be open until 7:00.

To avoid confusion, no refunds will be made during the first two weeks of classes. From the week of Sept. 27, books bought during September may be brought back for refund providing they are in perfect condition, and the receipt is presented. As of Oct. 4, our normal returns policy (10 days from date of purchase, accompanied by receipt, and in perfect condition) will be in effect.

Please note that the store is protected by Loss Prevention Agency and all cases of shoplifting will be prosecuted.

The store will be crammed during the first few weeks of classes so we ask your patience and cooperation during this time. If you need help, please ask!

A voice from the top



by Greg Deacon

September has returned quickly this year (at least it seems that way to me), yet I look forward to the opening school year with enthusiasm and anticipation.

First I would like to welcome all students of Glendon College. My name is Greg Deacon, and I am President of the Student Union, which consists of all enrolled students of Glendon College, whether that be

full or part time students. My role is to serve as spokesman for the G.C.S.U. and to co-ordinate Council's activities.

Although I have no radical ideas to bring to the position of President, I do feel that communication between Council and students must improve. My goal for this year is to get more people involved with the student government, as there is a role for every student to play.

This year Council has a working budget of approximately \$40,000. It is allocated in two ways. Forty-five per cent of the distribution of the G.C.S.U. budget is decided by referendum. The remainder is allocated by the Student Council.

It is the role of the Council to direct the Student Union to the best of its capability yet it is impossible for the 24 members of the Student Union to represent all the views of the students. But with you being better informed we will be able to receive feed-back.

Last year was known as the year of the cutbacks. This year it will be more directly felt on campus. Council has proposed a balanced budget for the school year 76-77, yet we realize that our allocation of money

in the proposed budget might not be acceptable to the Student Union. Therefore, it is up to the students to show their support for their organizations if they feel the Council has allocated the funds unjustly.

Presently, Council is questioning G.C.S.U.'s membership in the Ontario Federation of Students (O.F.S.) as well as the National Union of Students (N.U.S.). The total dues of \$3700.00 paid to these organizations out of our budget seems to be quite large when one considers the returns to date. During the Orientation Week N.U.S. and O.F.S. have been invited to set up information booths to introduce themselves to the students, and hopefully we will be able to establish whether or not our membership is viable.

In the next few weeks you will be hearing of some positions to be filled by students. These include Internal Affairs, Academic Affairs, two first year representatives, and several course union representatives, as well as Chief Returning Officer.

If you have any problems, feel free to drop into our office just across from the Cafeteria. We will try to help or at least point you in the right direction.

Something for Everyone

The years that you are a part of the Glendon College community provide you with a valuable opportunity for assistance in learning a variety of decision-making and problem-solving approaches that will be of value to you throughout your future years. While on campus students are frequently concerned about examinations, career choice, potential for graduate school, learning abilities, degree of motivation, as well as being preoccupied with family relationships, states of anxiety or depression, sexual problems, values in today's society. Studies have shown that people who took advantage of counselling services as students were, on the whole, better adjusted and received greater satisfaction in present occupations. The counsellor's role is to provide an objective frame of reference and additional information to assist people in making the best decisions and choices for themselves.

Individuals coming to Glendon as Mature Students or in Part-Time Studies have often been out of touch with the nature and demands of a university education. Motivation alone will not be enough to carry a person through the adjustment phases of becoming a confident and effective student. Our wide range of services are handled in a totally confidential manner and include skills training and group programmes specially geared to the expressed needs of people who have been away from studying for a time.

All First Year Students are encouraged to begin their university life by investigating the services offered at various times throughout the year. In addition to familiarizing yourself with resources available to enrich your educational experience on campus, it is important to explore constructive alternatives with a professionally trained counsellor who can help you to make the most of your potential for growth.

Academic and Vocational Counselling

Planning your academic work is related to making career decisions. Wise choices for courses and career are those which provide flexibility and adaptability in a changing world. Professional assistance is offered in a variety of individual and group programmes to facilitate decision-making in these important areas.

Counselling and Advisory Services

A friendly, relaxed setting is made available where students can discuss a problem of any nature, in privacy and complete confidentiality. No information is released to anyone inside or outside the University without the student's permission.

his vocational interest, aptitudes, academic ability, reading and study habits, attitudes toward school, values, personality make-up and interpersonal relationships, through standardized psychological tests. Registered students are not charged for these tests.

Group Counselling

Valuable, insightful information may come from group interaction. Where students express group format provides a new opportunity to self-exploration and discovery. Previous improving personal and communication skills, employee interview skills, vocational planning, reducing public speaking and exam anxieties, and assertiveness training. Bioenergetics.

Learning Skills

Instruction in learning how to learn ef-

ficiently: Reading Improvement courses, Effective Listening, Notetaking, Study Habit Improvement and Essay Writing workshops are important aids.

Language difficulties, poor reading habits, priorities in scheduling study are factors contributing to academic problems and frustration with learning. Students sometimes find that their approach to learning is insufficient to cope with the increased demands and higher standards of university work. Areas of assistance cover comprehension improvement, study skill refinement, and reduction of language skill deficiencies.

The Counselling Centre welcomes inquiries of any nature. Telephone or drop in to Glendon Hall, Room 100 - or telephone 487-6154/6180.

Activities for this week

THE FOLLOWING IS A SCHEDULE OF THIS YEAR'S ORIENTATION WEEK ACTIVITIES COMPILED BY THE GLENDON COLLEGE STUDENT COUNCIL. AN EXCITING AND INTERESTING LIST OF EVENTS FROM KITE TO GLIDING DEMOS, TO DANCES, PROMISES TO MAKE THIS YEAR'S O.W. A VALUABLE EXPERIENCE FOR ALL THOSE WHO PARTAKE IN THE FESTIVITIES. SO DON'T MISS OUT ON THE BEST WAY TO START OUT YOUR 1976/77 ACADEMIC YEAR AT GLENDON COLLEGE.

Wednesday September 8: This afternoon you will be thrilled and amazed by demonstrations and lectures by the SKY DIVERS AND PARACHUTISTS ASSOCIATIONS. Bill Love will be in Room 204 describing every aspect of hand-gliding with the aid of films and equipment. Bill is preceded by a representative of Sky Divers Club who will bring a real parachute and show films which describe the technique of parachute jumping from the sky down. You can catch both of these activities in room 204 from 10a.m. on.

At 8p.m. this evening there will be a DANCE in the main dining hall (O.D.H.) Music provided by Scott and Barber. Don't miss it. Licensed.

Thursday September 9: For those interested there will be a hike starting at the Proctor Field House at 3:30 p.m. A member of the G.C.S.U. will be on hand to lead the participants through the pastoral wonderland of the Glendon College ravine.

Be sure to catch the folksingers Karen Gold and David Paul in the O.D.H. at 9:00 pm.

Friday September 10: At 9p.m. you can thrill to the excitement and challenge of CASINO NIGHT in the main dining hall.

Gambling coupons may be purchased just outside the door of the Casino and prizes which would make the Crown Prince of Latvia green with envy may be won inside. Licensed.

Saturday September 11: Competition Day will provide Glendonites with an opportunity to display their Universally formidable Spartan prowess. This event will be held in the Quad starting at 1:00. Spectators will be held in awe by a visit from the Labatt's Balloon which is scheduled to blow in during the day.

Sunday September 12: A Touch of Class, the Oscar winning comedy starring Glenda Jackson and George Segal will be shown in Room 204 at 8 p.m.

For the Duration of the Week: The National Union of Students and the Ontario Federation of Students will set up booths. Shinerama will have an information booth set up to inform students of this most worthy cause and its activities.

The Café de la Terrasse, situated in the basement of Glendon Hall, will be open for the convenience of all students and faculty during Orientation Week. Snacks and beverages will be served at all times. Hours: listed on all notice boards.

HIGHLIGHT OF THE WEEK

Saturday September 11: Come join us in the evening at 9:00 for a mixture of traditional German festivities and popular music.

August Night, the renowned band of Kitchener's Oktoberfest will be playing until 1:00 a.m.

Pro Tem

PRO TEM is the weekly independent paper of Glendon College, founded in 1961. The opinions expressed are the writer's, and those unsigned are the responsibility of the PRO TEM Organization. PRO TEM is a member of Canadian University Press and is published by Webman Limited.

Editors: Clare Uzielli, Kim Wilde
Business Managers: Ron Stott, Clare Uzielli
Entertainment Editor: Rob Williams
Production: Bob Faulkner, Clare Uzielli, Kim Wilde

There's room here for your name.

For National Advertising, this paper is a member of
youthstream.
 The Campus Network
 307 Davenport Road, Toronto, Ontario M5R 1K5
 (416) 925-6359

With a little help from our friends

When we received our invoice from C.U.P. (Canadian University Press) and discovered that our membership fees had doubled since last year, we editors decided that the time had come to investigate the services provided by this organization. Our first step in that direction was to attend the C.U.P. summer school held in Hamilton from August 28 to September 1. It proved to be a worthwhile venture.

You may have noticed that today is not September 8, 1976. We refuse to apologize for this fact. Due to circumstances, most of which were beyond our control, we were unable to meet our printer's deadline, which was 6:00 p.m. on Tuesdays. It seems that some of our contributors found it equally difficult to meet PRO TEM's deadlines (Friday night for regular articles/features and 12 noon on Monday for everything else.)

We now know how to make better use of their facilities. (Last year the news service was used only as filler.) To make membership in such an organization worthwhile, necessitates contributions from all the member papers--that means us too. C.U.P. is a co-operative association.

Next time these deadlines are not met the PRO TEM "subscribers" may well be subjected to a very lengthy editorial. Perish the thought! Without the necessary co-operation someone has to drive half way to the North Pole (Bradford) to our new printers.

There were, of course, the usual first-time-out mishaps--the machines were not very co-operative either. But, we will, with a little help from our friends, be more organized for next issue (Wednesday). Enough said.

We have since (on Monday) made contact with one of the Ontario fieldworkers who is proving to be most helpful.



To the Editors,

The job of a student newspaper is to raise controversy. It should point out inaccuracies, inconsistencies, inequalities and injustices present within the college community. This, I feel, was sadly lacking in last year's volume of PRO TEM.

Not everyone can or will express themselves in print. Some do; some better than others. One job of an editor is to publish what is available after careful editing. This also means elimination of fillers and long-winded articles.

Another job of a newspaper is to report the 'meaty' issues on campus. A job of its editor is to organize a reporting staff to enlighten or inform the community of these issues. And if there are no reporters, the editor makes sure the copy is there, even if he/she must do it himself.

Taking on such responsibilities is why the editor of PRO TEM is one of the few 'student' positions which commands a salary at

Glendon. But being editor is more than just a job.

It is some undefinable sense of the need to inform, and moreover, to comment upon such information. Surely an editor can make intelligent comments on the issues at hand. Part of my student fees are paying for the position(s) of editor(s). Is it so much to ask to read his/her opinion on the student matters at hand?

In anticipating this year's volume of PRO TEM I appeal to our editors to consider these points when determining their role on paper's staff. I look for a vast improvement over last year's ho-hum volume and lack of editorial content.

The best of luck to you and here's hoping you get the staff support which you deserve and which is so necessary to make the paper a success.

Rob Williams

WANTED

PRO TEM

is looking for an **ADVERTISING MANAGER**
 This person would work on a 10% commission basis, soliciting ads from local businesses.

CARTOONIST

We need someone with artistic talent and a good sense of humour.

REPORTERS AND WRITERS:

We have feature stories that need to be researched and written up. We want original ideas too.

LAY OUT PROOF READERS PASTE UP

You will have the opportunity to be trained by professionals, and you will have a marketable skill for the rest of your life.
 We need people with an eye for errors and vivid imaginations to do the job.

Anyone interested in writing book reviews for PRO TEM, please contact me at the office (487-1002) or at residence (D312-Wood). I have about six books which currently need to be reviewed and there will be more throughout the year. Topics so far are: general interest, theatre, politics, history, literature (including poetry), and women's evolution. Students enrolled in English 423 (Literary

and Dramatic Criticism) may find this of particular interest. Persons submitting reviews for this paper get to keep the book which they have chosen to review, so see me in the office in Glendon Hall or leave a message with anyone there.

Rob Williams,
 Book Review Editor

Media communications services

Distribution: Equipment & Services

- slide projectors
- film projectors
- overhead projectors
- opaque projectors
- audio tape recorders
- cassette tape recorders
- PA systems
- video tape playbacks

Production:

- television programs
- slide tape shows
- slides-colour, B & W
- prints

- photo enlargements
- location photography
- passport photos
- overhead transparencies

Engineering and Maintenance:

- the University's media equipment
- design of media
- technical consultation

PLEASE NOTE:

1. To book equipment or service a "DIAR Services Requisition Form" must be completed and submitted to DIAR, Rm. 144, York Hall, Glendon. Telephone requests will no longer be accepted.
2. Requests must reach DIAR before noon

on the day prior to that on which the service is required.

3. Four days prior notice is requested for the supply of projectionists.

4. A projectionist is required for 16mm projections in Room 204 and 129.

To help us give you better service please:

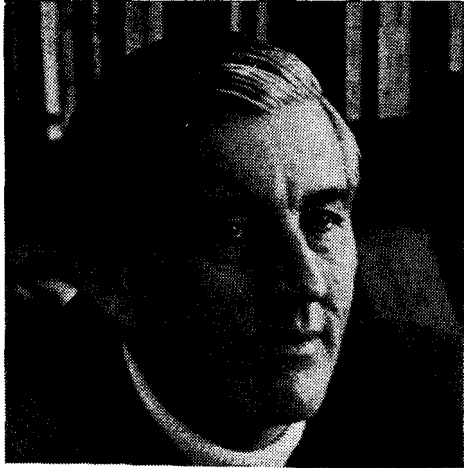
1. Call -6155 if problems occur. Report any service problems to the Director, 667-3411, this will ensure that prompt action is taken to correct the situation.

2. Try to end classes promptly so that DIAR personnel can have enough time to remove and set up equipment needed for the next class period.

Small Charge for Delivering Equipment - Free Loan Service

For Information and Service Requisitions:

Glendon 487-6155 Room 144, York Hall
 York 667-3227 Rm. 002B, Central Square



Dr. David McQueen is Glendon's principal. His office can be found in C-wing of York Hall, Room C-203. His secretary is Jennifer Waugh. Watch for some of his excellent photographs in future issues of PRO TEM.

All You Need t
(for those of us)



RADIO GLENDON

They presently broadcast in the Café, the Junior Common Room & the PRO TEM office (thank you!). The station often sponsors our dances-- they've put on some really fine shows in the past. Phone 487-6103 or drop in to the station in the Old Mansion. (see Al's article on page 6 for more info.)

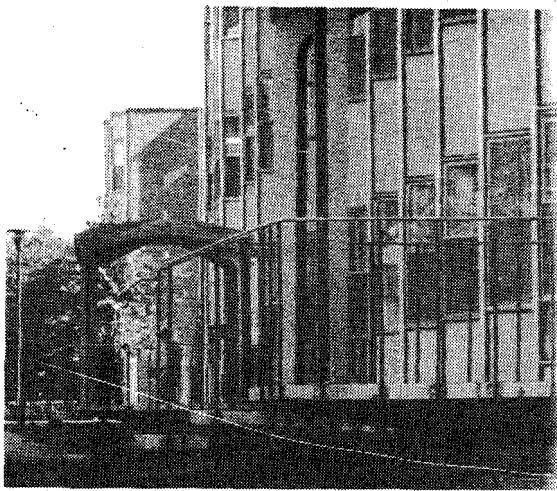
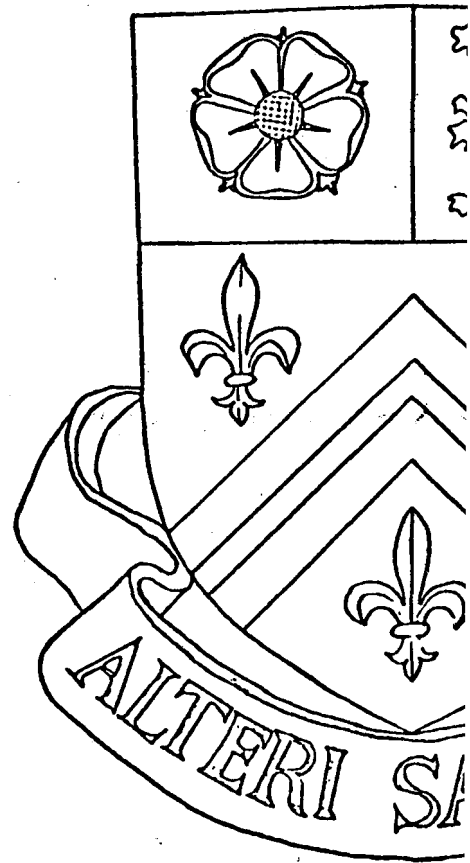


The TD Bank located at Yonge and Lawrence has a branch in Glendon Hall. It will be open every day for the first two weeks from September 10-21, Monday to Friday from 11 am to 2 pm.

From September 25th, regular hours will resume and the bank will be open on Tuesdays and Fridays from 11-2.



The Health Services are located at the east end of Glendon Hall. Dr. Johnson is the resident doctor. He can be contacted at 487-6168, between 12 and 1, Monday to Friday. He may also be reached at Sunnybrook Hospital, 486-3000. Mrs. Dixon, the supervisor, is always there in your time of need, and Miss Dorothy Bremner, the nurse, is available from 10 to 6 daily.



Security and Parking is headed by W. R. Firman. You can phone him at 487-6141. He can be located in room C-108 or roaming about the campus checking things out.

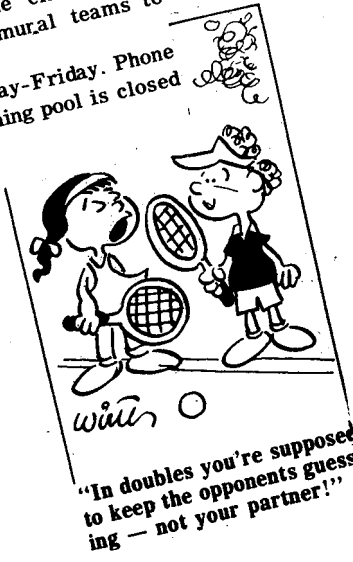


The library is open from 9 am to 12 midnight Monday thru Friday, from 9 am to 6 pm on Saturdays and from 1 pm to midnight on Sundays. Watch for special hours holiday weekends--they will be posted outside the library and announced in PRO TEM. Phone 487-6139 for Reference information or 487-6140 for general circulation information.

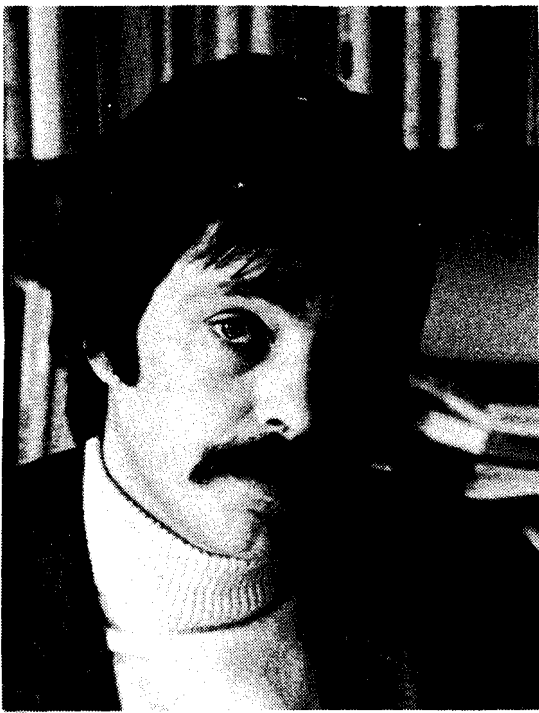
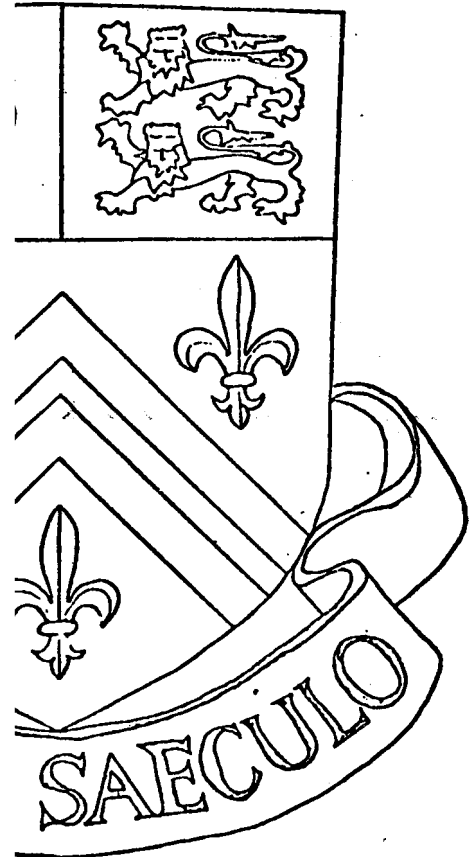
ed to Know.....

(of us who are still lost)

Sports facilities are found in the Proctor Field House, down the 100 steps towards the lower parking area. Next week we will publish a schedule of all the classes they offer, as well as the intramural teams to be joined.
Office hours are 9-5, Monday-Friday. Phone 487-6151. Note: The swimming pool is closed until Sept. 12 for cleaning.



The Post Office is in C-wing York Hall. It is open Monday to Friday from 9:00 am to 11:30 a.m. and from 12:30 p.m. to 4:30 p.m. The latest time for receiving registered mail is 11:30 a.m.



The Dean of Students and Master of Residence is Ron Sabourin. The picture above is a "before" picture-before he shaved off his moustache. Look for an up to date photo in a forthcoming issue. He can be found in Room 242 in York Hall, phone numbers 487-6107 or 6108.

PRO TEM -We are also located in Glendon Hall, across from the TD bank. Clare and Kim are this year's Editors. This, our first issue for the year, may indicate a need for help. Please call 487-1002, or visit anytime.



QUEBECHAUD

par Louis Morin

Pour la 3^{ième} année consécutive, l'organisation Québechaud était heureux de participer à la semaine d'orientation en vous présentant Pierre David dans le Café de la Terrasse, mardi soir.

Pierre David est un jeune chansonnier de Montréal qui roule sa brosse (et sa guitare) dans les cafés de la province fleurdelisée.

Il a à son crédit les années d'expériences nécessaires pour vous faire passer une soirée des plus agréables. Pierre David est LE maître d'orchestre pour les "pubs" comme le nôtre. C'était un honneur de le recevoir et c'était un plaisir pour Québechaud de vous le présenter.

Sac - Snacking it in the Sous - Sol

by Mack the Knife

Glendon is gaining a permanent theatre, catching up on missed meals, nearly col- but losing one of its two big dining halls (the New Dining Hall) in the process. Yet even so, it should be possible, through careful planning and reasonable co-operation from everybody, to feed the community efficiently--to have our theatre and our meals too.

We are not looking for miracles. Instead, we are hoping to deliver satisfactory food service by opening a thoroughly modern, fast-food snack-bar in the basement of York Hall, and by substantially altering the cafeteria servery upstairs so that it can do a far swifter job of getting food to all those who want a solid, sit-down meal in the Old Dining Hall.

Close observers of last year's food scene at Glendon will have noted that the real weak point in the system -- the biggest cause of customer exasperation -- was not lack of dining-hall seating space, but rather the incredible slowness of the line-ups moving through the cafeteria servery. It is rumoured that some particularly hungry students,

one side to another of the edibles and drinkables out to some other location. Needless to say, it is considered socially de rigeur, in either case, to deposit the remains in suitable receptacles.

Don Smith, Beaver Foods manager, analyzed the difficulty: we were running a highly inflexible convoy system, with every customer forced to move at the speed of the slowest. But virtually nothing could be done to change this, because the stainless-steel servery equipment was old-style, and firmly fixed to the floor.

But now the upheaval brought about by the conversion of the New Dining Hall has provided an opportunity to revamp the servery along much more modern lines--to go to the flexible kind of system that has brought about faster service at the Central Square of York Main Campus, and many other locations.

It's called the scramble system. You don't have to stay in one line of in one part of the one line, if what you want is available elsewhere. Queue-jumping becomes socially acceptable--nay, socially desirable behavior!

Zig-zagging and broken-field running from the tables provided, or brown - bag your

game is to go in, get what you want, and get it out past one of the two cash registers as fast as you can. Just one constraint: don't crash into other players and cause them to dump their food all over the floor; for that, you get heavy demerits. But otherwise, the faster you play, the more you speed things up for everybody else.

Here are some further practical hints for Glendon eaters:

(1) Remember that you have alternatives. If things seem pretty crowded in the Old Dining Hall, there is always the snack bar ("Sac-Snack du Sous-sol") in the basement or the Café de la Terrasse over in Glendon Hall. The snack-bar, like the ODH cafeteria accepts both cash and scrip. The Café de la Terrasse is cash-only, but it does serve beer and atmosphere as well as food -- entertainment, too, on occasion.

(2) In the Sac-Snack, you may either eat at the tables provided, or brown - bag your

edibles and drinkables out to some other location. Needless to say, it is considered socially de rigeur, in either case, to deposit the remains in suitable receptacles.

(3) It is considered very anti-social to use either the Old Dining Hall or the Sac-Snack for studying, bridge, Master - Mind, etc., during peak eating hours. In off-peak hours when there are lots of spare chairs and tables available, it's quite another matter.

(4) The servery to the Old Dining Hall is so arranged that you can see the list of what's available before you actually go on to the playing field. It will make things easier for everybody if you scan the list first, then hit the counters.

(5) No new system can be expected to work perfectly the first time around. Don Smith, who will be plainly visible in the front lines of the ODH servery during peak hours, welcomes sincere criticism and suggestions. If important problems crop up that he cannot resolve himself, the Glendon Food Service Committee will be convened to find appropriate answers.

Radio Glendon Appeals for License

by Alan Lysaght, Station Manager

For those of you who do not know, Glendon College has its own radio station run and operated entirely by Glendon students. We presently broadcast to several places in the college from Monday to Friday between 9a.m. and midnight.

Now in its fifth year of operation, Radio

Committee for Day Care

There are several sound reasons for trying to establish a quality day-care facility at Glendon College. Members of the Glendon community may already be experiencing difficulty in finding adequate care for their children. For new students the existence of day care at the college could be an important inducement to enrolling at Glendon. Day care facilities could be particularly important in the recruitment of mature and part-time students. Whether for people already at Glendon or people who will choose to come to the college, day care is a thoroughly appropriate addition to an institution in which so many are employed or enrolled in classes.

This notice signals the start of planning activities for day care at Glendon. We invite anyone interested in such a project to join us on a committee to establish a day care facility at the Glendon campus. While we assume that people who might use day care here would be most likely to wish a voice in determining the form and character of such a facility, we encourage any interested person to work on this project with us.

Could you fill in the form below and return it to:

A. Harris (487-6121; 531-0962)
Room 124, York Hall

Jane Couchman (487-6134; 488-2739)
Room 231, York Hall

Glendon enters its most exciting phase of development. This summer Radio Glendon applied to the C.R.T.C., the federal government's licensing commission, for a licence to transmit to the residences, and to feed a stereo signal through the F.M. service of the Toronto Cable companies. We have had a great deal of encouragement from the C.R.T.C. and following a public hearing we expect to receive the licence in a few months.

Operating an FM station obviously requires a lot of work in preparation and presentation. This licence requires us to produce and provide an increased amount of interviews, informational and special topic programs, and a more diverse schedule of musical programming.

If you are interested in aiding the development of an alternative radio service, please drop in and leave your name and phone number. Our first meeting is on Monday, September 13 at 3:15 in the Radio Station, on the main floor of Glendon Hall (the old mansion). If you can't make that one, there will be another on Tuesday at 3:15 in the same location.

We need a large staff of announcers, operators, news researchers and readers, producers and writers, and many others to help in our operation. If you can't work throughout the year but would like to be involved in the production of one or more special interest programs, please get in touch with us.

Editor's Note: For articles written under a pseudonym we reserve the right to edit as we see fit. As a rule we prefer to discuss changes with the author.

All other members of the Glendon community are encouraged to stop in to see what we do, and offer advice, suggestions, criticism, or encouragement. You will be helped in our operation. If you can't work throughout the year but would like to be involved in the production of one or more special interest programs, please get in touch with us.

STUDENTS—SAVE TIME, SAVE WORK AND SAVE MONEY AT...

w.t.ruddy

Bring in this advertisement to any of our 3 locations, or mail the ad to our Head Office, together with Student Identification and save up to \$10!

This offer expires September 27th and is applicable to students only.

Commodore 4190R Scientific Calculator.

The ultimate in pre-programmed calculators—with 106 functions.

- An extremely powerful electric slide rule.
- A complete pre-programmed statistical calculator.
- An advanced scientific functions calculator.
- A complete conversion calculator.

Reg. price **\$79.95**
Save **\$10** with student identification.



This super-scientific model provides a huge package of functions. It has three registers for statistical calculations, including standard deviation, sample values, combinations and probability calculations, factorial, binomial, Poisson and Gaussian distribution; two registers for linear regression.

- 14-character LED display (10 digit mantissa, 2-digit exponent, 2 signs).
- Exponent entry, increase and decrease.
- All logarithmic, trigonometric and hyperbolic functions.
- Percentage key and delta percent key, parenthesis.
- 2 accumulating memories.
- 12 power keys, 12 metric conversions.
- Operates on rechargeable ni-cad battery (adapter/recharger included).

PLUS:
10% OFF all brand-name calculators, including—
Texas Instruments,
Hewlett-Packard
Commodore

Commodore 4148R Scientific Calculator.

With single-function keys and algebraic logic.

A uniquely simple keyboard set-up with single-function keys for quick solving of problems involving log and trig functions, polar/rectangular and degree/radian conversions, mean and standard deviations, and parenthesis.

- 14-character LED display (10 digit mantissa, 2-digit exponent, 2 signs).
- Exponent entry, increase and decrease.
- 2 memory systems—one accumulating.
- Natural and common log and antilogs.
- Squares and square roots.
- Any root, any power.
- Operates on rechargeable ni-cad battery. (adapter/recharger included).

Reg. price **\$59.95**
Save **\$10** with student identification.

Commodore 4146R Financial Calculator.

Designed to solve complex problems.

This model is the equivalent of volumes of financial tables constantly used in business—

and it solves problems using simple algebraic logic. It gives fast answers to calculations on interest and annuities, mortgages, effective yield, effect rate... and many more.

- 14-character LED display with 10-digit mantissa, 2-digit exponent, 2 signs.
- 2 independent memory registers—one accumulating.
- Percentages and percentage differences.
- Time base—360 or 365 day year.
- Down payment key.
- Operates on rechargeable ni-cad battery (adapter/recharger included).

Reg. price **\$59.95**
Save **\$10** with student identification.

1. I would like to work on a committee to establish day care at Glendon _____ days a week.

2. I would use a day care centre at Glendon _____ days a week.

My child(ren) is (are) _____ years old.

(This question is just designed to estimate how many children might be enrolled in day care. It entails no commitment to use the centre or serve on the committee.)

NAME _____
PHONE _____

* Store locations:
130 Cumberland St. (416) 922-3725
11½ Queen St. East (416) 862-0403
Towne & Counrye Plaza
(Yonge & Steeles) (416) 221-5567

w.t.ruddy
The Businessman's Shop
OPENING SOON IN OTTAWA

Institutional Accounts and
Out-of-town orders via direct
mail:
P.O. Box 520, Agincourt, Ont.
(416) 496-0210

That's Entertainment

Glendon's theatre—a "Multi-Use Space"

There have been changes on campus over the summer, and one of them is the acquisition of a new theatre and Art Gallery. **PRO TEM** talked to Charles Northcote, assistant to the Dean about the new developments. Charlie, who is also an actor, and who has been involved with theatre productions at Glendon for a number of years, was very enthusiastic about the project, and most happy to tell us about it.

Glendon's new theatre, officially called a Multi-Use Space, was financed by a \$100,000 capital grant from the provincial government. It was designed by Ted Paget, who has been hired by York University as the first technical director of the new space.

Located in the former New Dining Hall, the flexible Multi-Use Space will accommodate dances, concerts, films (for which there is now a film screen for proper projection), and guest speakers, with seating for up to 300-350 people.

The Dramatic Arts Program and its French counterpart, Le programme d'art dramatique, will make good use of the new theatre. They are now course-related activities, complementing the theatre courses in the Humanities Department.

The Principal's Dining Room, adjoining the theatre, has become Glendon's new Art Gallery, the old one having been turned into 3 offices with a computer terminal.

Because of the conversion, more effective use will be made of the Old Dining Hall, and the new fast food service has been added in the basement of York Hall, next to the lockers. The pub will be open full hours, and these three areas should be capable of handling food service for the Glendon Community.

The new theatre will also contain workshops, dressing room facilities, a loading dock, and storage space for the light and sound equipment, some of which is new.

Bookings may be arranged through Charles Northcote at the Dean's office. Generally speaking, bookings will be made on the principle of first come, first served. If there is a conflicting demand, then the list of priorities is as follows: *

- 1) Course-related activities
- 2) Regular college-supported activities (ie. dances, Québécois)
- 3) Special college-supported activities (ie. guest speakers)
- 4) Other Activities involving college personnel
- 5) York University-supported activities
- 6) Outside groups

* for more detailed information on the list of priorities, check in at the Dean of students' office.

Construction was to have been completed by September but the grant did not come through in time. The construction has been rescheduled to begin on September 21.

A Grand Opening Inaugural Festival will officially open the facility Monday, November 15, with a new Canadian play.

Written by Bob Wallace, a professor here at Glendon, the play is entitled *End of Term or Goodbye Pompeii*. It will be directed by Charles Northcote, and produced by the DAP. Ted Paget will be doing the designing. The plot revolves around five students in a communal house on the last day of school, packing to leave. Hopefully the play will attract attention from outside theatre companies, as this is its première. It is due to be published by the Playwrights' Co-op.

During the second week of the festival (Nov. 22-26), it is hoped that a French play will be produced, although nothing has

yet been decided. In the third week, the award-winning play *Creeps* will be shown, once again directed by Charles Northcote who was in the original production. Written by David Freeman, the play is about cerebral palsy victims, and it opened the Taragon Theatre in Toronto. Peter Kolisnyk, art director at Glendon, will design the show and it is interesting to note that he also designed the original.

While this is going on, a show of Canadian work, and possibly the first Glendon student show of the year will take place. Tickets will be sold for the individual events as well as for all the events together.

There will be a publicity campaign to attract the attention of the public so that facilities will become more widely known and used.

This is just a beginning for Glendon's theatre enthusiasts, who hope to accumulate more equipment and services for their well deserved theatre. The combined talents of the DAP/PAD, interested students and faculty, Ted Paget, and Charles Northcote, who is rapidly becoming the fastest mover on campus, will certainly make this a year to be remembered.

Before and Afters . . . Auditions soon

by Rob Williams

Afters is a new play to be presented on Saturday, December 4, which promises to be one of the finest examples of contemporary theatre Glendonites have ever experienced. Not a 'typical' college production, *Afters* will be presented with a high degree of quality and professionalism.

Achieving this quality was uppermost in playwright Jeff Freedman's mind when he penned the script. Composer Brent Johnson agreed. One year in the making and \$3,000 of personal financing have resulted in a play which they hope will involve many Glendonites in an extra-curricular sort of way. That is, students will be able to contribute and participate without having to be in an English or a theatre course. Extensive touring has already been planned for such places as York Main, U. of T., and Seneca College. This will provide budding young actors with maximum exposure.

The play is a joint effort with both Brent and Jeff contributing and collaborating on sound and script.

The sound track (all original compositions) will be presented in quad and will enhance

mime and dance featured throughout the play as an integral part. An experienced choreographer was hired to develop the dance sequences. The playwrights pointed out that the sound track was designed to emphasize the emotions being presented on stage, rather than merely sensationalism to draw crowds.

Afters is a completely original idea, to which the audience must bring an awareness of the bizarre in order to appreciate the plot.

As Jeff recounted it to me, a boy is conceived out of the incestuous mating of a mother and son. The child develops with his mother's psychological make-up. The boy feels an empathy for old people and often visits old folk's homes in an effort to be with them and understand them.

Because of his socially unacceptable situation at birth, the boy is committed to an asylum. When he eventually gets out, he buys a large estate with money his mother has put aside for him in trust until his twenty-first birthday.

The ending of the story is best left for

you to find out, but the general development throughout the play can best be described as a psychological drama with a tragic bent. It does not explore some new genetic theory. Rather, its purpose is to magnify everyday family occurrences by exaggeration. The play is no more perverse than daily life is, yet the exaggeration is necessary to point out life's perversities.

"It shows us a part of our lives which we do not like to reckon with, or cannot reckon with because we are so immersed in it that we cannot see it", Jeff commented.

No doubt different people will notice different themes in the play: the ambivalence, the oedipal complex, the repulsion against being intimate, and the disguised conflicts. All should add up to a highly professional and most fascinating play for this fall season.

Jeff and Brent wanted me to note that there will be an all-Glendon cast. Rehearsals will be held beginning in September, and auditions will be taking place very soon. Look for the time and place in a future issue of **PRO TEM**.



A student researcher named Sue,
While studying on-campus brew,
Says the trend is now clear
To a beer without peer,
Labatt's 'Blue' is now 'in'
with 'Who's who'!



Labatt's Blue smiles along with you

MOVIES

Films at OISE: 252 Bloor St. W. 537-9631
Sept. 8, Woody Allen's *A Love and Death* at 7:30, *Sleeper* at 9:30, Sept. 9, *Robin and Marian* at 7:30, *The Fortune* at 9:30.

The Roxy; 1215 Danforth at Greenwood subway, 461-2401. Admission \$1.99, senior citizens and children 75 cents. Sept. 8 and 9, *The Missouri Breaks and Vigilante Force* with Kris Kristofferson. Sept. 10, *The Rocky Horror Picture Show* and *Zardoz*.

All-New \$2.50 New Yorker: 651 Yonge St., 925-6400. Sept. 8, *Walkabout* at 7 and 10:25, *Kid Blue* at 8:40. Sept. 9, *Hour of the Wolf* at 6:30 and 10:20, *Juliet of the Spirits* at 8. Sept. 10, *Blazing Saddles* at 7 and 10, *Everything You Always Wanted to Know About Sex* at 2:30, 5:40 and 8:50, *Blazing Saddles* at 4, 7:15 and 10:25.

The 99-Cent Centre: 771 Dundas St. near Bathurst, 368-9555. Admission 99 cents. Sept. 8, *Peeper* with Michael Caine and *Royal Flash*. Sept. 9, *Peeper* and *The French Connection*. Sept. 10 and 11, *Jaws* and *Never Give A Sucker An Even Break* with W.C. Fields.

The Screening Room: Kingsway Cinema, 4040 Bloor St. Royal York subway station. Admission \$1.99. 236-2437. Nightly at 7p.m. Sept. 8, *Sherlock Holmes' Smarter Brother* and *Butch Cassidy And The Sundance Kid*. Sept. 9 to 15, *Gone With The Wind*.

Great Directors: Ontario Science Centre, 770 Don Mills Rd. Sept. 8 at 7:30, *John Huston's The Man Who Would Be King*.

Cinema Lumiere: 290 College St. 925-9938. Admission \$2 Monday to Thursday, \$2.50 Friday and Saturday. Sept. 8, *Marriage Italian Style* at 7:30, *Two Women* at 9:30. Sept. 9, *Elektra* at 7:30, *Oedipus The King* at 9:30. Sept. 10, *The Middle Of The World* at 7:30, *a Brief Vacation* at 9:15.

Revue Repertory: 400 Roncesvalles Ave., 531-9959. Sept. 8 to 9, *Martin Scorsese's Taxi Driver* with Robert de Niro at 7:15 and 9:30. Sept. 10 to 14, *Ingmar Bergman's Face To Face* with Liv Ullman at 7 and 9:30.

Friday Films: Library House, 265 Gerrard St. W. Free. Sept. 10 at 7:30, *The Incredible Petrified World*.

San Carlino: Dixie Rd. at Bloor St. W., 625-5702. Admission \$1.50. Sept. 8 to 9, *The Rocky Horror Picture Show* at 7 and 9:10. Sept. 10 to 12, *Monty Python And The Holy Grail* at 7, 8:40 and 10:20. Matinees Saturday and Sunday at 3 p.m.

Science Fiction: Ontario Science Centre, 770 Don Mills Rd. Sept. 10, *Fritz Lang's Metropolis (1926)*. Musical accompaniment by Horace Lapp.

LIVE THEATRE

Stratford Festival: On the Festival Stage: *The Merchant of Venice*, Sept. 9 at 8:30,



Sept. 11 at 2. *A Midsummer Night's Dream*, Sept. 10 and 11 at 8:30, Sept. 8 at 2. *Antony and Cleopatra*, Sept. 8 at 8:30. On the Avon Stage: *The Importance of Being Earnest*, Sept. 8 at 8:30. *Hamlet (Monette)*, Sept. 7 at 8:30. *The Tempest*, Sept. 9 at 8:30. *Hamlet (Pennell)*, Sept. 11 at 2. *Three Sisters*, Sept. 10 and 11 at 8:30, Sept. 8 at 2. Tickets from \$2.50 to \$12.00. 363-4471.

CONCERTS

ROB WILLIAMS

Shaw Festival: *The Apple Cart*, Sept. 4 and 10 at 8:30, Sept. 9 and 10 at 2, Sept 11 at 2:30. *Mrs. Warren's Profession*, Sept. 8 and 11 at 8:30, Sept. 8 at 5. Tickets from \$4.50 to \$10. Niagara-on-the-Lake. 361-1544.

The Education Of Oversoul 7: A combination of dance, music, drama, film and slides in this occult science fiction is performed by the Cabbagetown Theatre Company. To Sept. 11, Tues. to Thurs. \$4, Fri. to Sun. \$5. Curtain time 8:30 pm. St. Paul's Centre, 121 Avenue Rd. 961-9427.



The Education of Oversoul 7

The Bawdy Politik: The Jest Society present a new adventure in total political frontal nudity, directed and produced by Martin Bronstein. To Sept. 11, Mon. to Fri. at 8:30 pm. Sat. at 6:30 and 9:30 pm. Tickets Mon. to Thurs. \$4.50, Fri. and Sat. \$5.50. Toronto Workshop Productions Theatre, 10 Alexander St. Reservations 925-8640.

Porgy and Bess: George and Ira Gershwin's musical with full orchestration, and the cast includes Donny Ray Albert, Abraham Lind-Oquendo, Clamma Dale, Irene Oliver, Florence Quivar and Wilma Skakesnider. To Sept. 11, Mon. to Sat. at 8:30 pm, Wed. and Sat. matinees at 2 pm. Tickets range from \$3.50 to \$12.50. O'Keefe Centre, Front and Yonge Sts. 363-6633.

The Snob: The North American premiere of Carl Sternheim's biting social commentary, performed by Theatre Plus as part of their 1976 subscription series. To Sept. 11, Mon. to Sat. at 8:30 pm. Tickets range from \$3.50 to \$7. St. Lawrence Centre, 27 Front St. E. Reservations 366-7723.

Dial "M" For Murder: Peter Peroff directs the Toronto Truck Theatre in a suspense-filled drama, written by Frederick Knott. To Sept. 25, Wed. to Fri. and Sun. at 8:30 pm, Sat at 7 and 9:30 pm. Tickets Wed. Thurs., and Sun. \$3.50 Fri. \$4, Sat. \$4.50, students and senior citizens \$1 discount. Colonnade Theatre, 131 Bloor St. W. 922-0084.

Plaza Suite: Michael Macina directs the Toronto Truck Theatre in Neil Simon's comedy which takes a look at three different days and three separate situations all occurring in the same hotel suite in New York. To Oct. 2. Wed. to Fri. and Sun. at 8:30 pm. Sat. at 7 and 9:30 pm. Tickets Wed., Thurs., and Sun. \$3.50, Fri. \$4, Sat. 4.50, students and senior citizens \$1 discount. 94 Belmont. 922-0084.

Yuk Yuk's: A new club aimed at providing a launching pad for new Canadian comics, monologists, mimes, clowns, revue troupes and a feature act. Wednesdays at 8:30 pm. Sept. 8, Paul Wildbaum entertains. Admission \$1. 519 Church St.

On Tap

What The Butler Saw: Joe Orton's comedy turns a doctor's consulting room into a glorious maelstrom of zany activity as his characters lose their wits and their clothes. To Sept. 12, Tues. to Fri. and Sun. at 8:30 pm, Sat. at 7 and 9:30 pm. Admission Tues. to Thurs. and Sun. \$3.50, students \$2.50, Fri. and Sat. \$4. Phoenix Theatre, 390 Dupont St. Reservations. 922-7835.

NIGHTCLUBS

Future Shock at Colonial, 203 Yonge St.

Windover at Egerton's, 70 Gerrard St. E. Sept. 9-11.

Fabulous Rhinestones at the El Mocambo Tavern, 464 Spadina Ave. Sept. 8-11.

Mighty Pope at Forge, 5 St. Joseph St.

Triumph at Gasworks 585 Yonge St.

Long John Saldry at Horseshoe Tavern, 368 Queen St. W.

Downchild at Midwich Cuckoo, 240 Jarvis St.

David Essig at Riverboat, 134 Yorkville Ave. Sept. 7-12.



Dave Essig at the Riverboat.

Goddo at Piccadilly Tube, 316 Yonge St.

Eclipse at Chimney, 579 Yonge St.

Liverpool at Knob Hill Hotel, 2787 Eglinton E.

Stylistics at Generator, 2180 Yonge St.

Electric Light Orchestra at Maple Leaf Gardens. Tues. Sept. 14, 8 pm. \$6.60 & \$7.70

Nazareth with Mahogany Rush at Maple Leaf Gardens Concert Bowl, Thurs. Sept 16, 8 pm. \$7.70 & \$6.60.

Gino Vanelli at Massey Hall, Sept. 17 and 18, 8 pm. \$6,7,8.

The Who at Maple Leaf Gardens, Oct. 21

**IMPORTANT MEETING FOR TYPESETTERS
on FRIDAY SEPT. 10 at 2:30**

This is your chance to learn about the machine from someone who knows.

This will be followed by a **GENERAL STAFF MEETING AT 3:30**

The more the merrier!!!

